

Strength That Stops.

Tru-Frame® Security Screen Doors

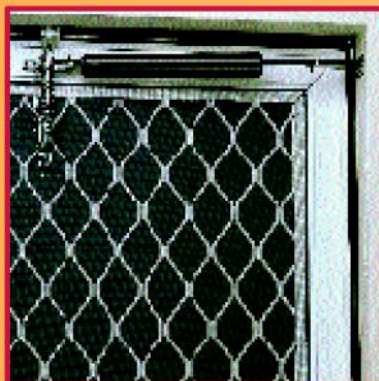


TRU-FRAME®
A name you can build on.



Built to protect your family when strangers approach your door.

The Tru-Frame® Security Screen Door also enhances the appearance of your entryway with its sculptured pattern grille.



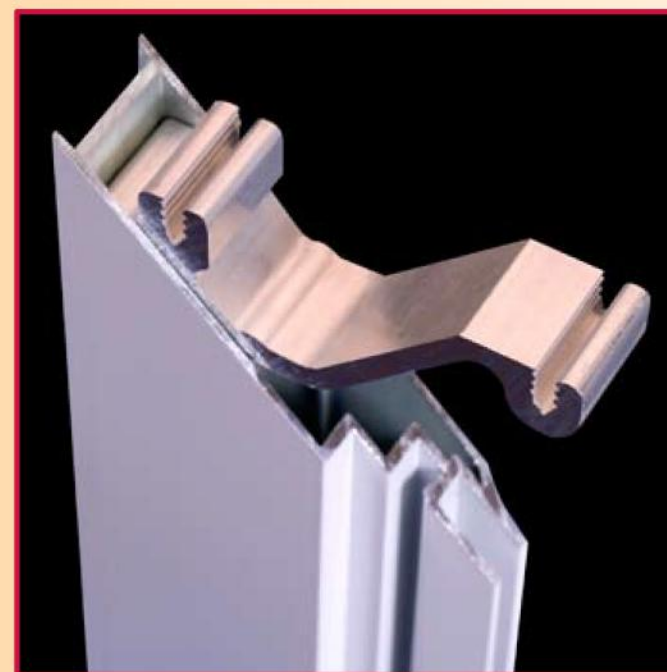
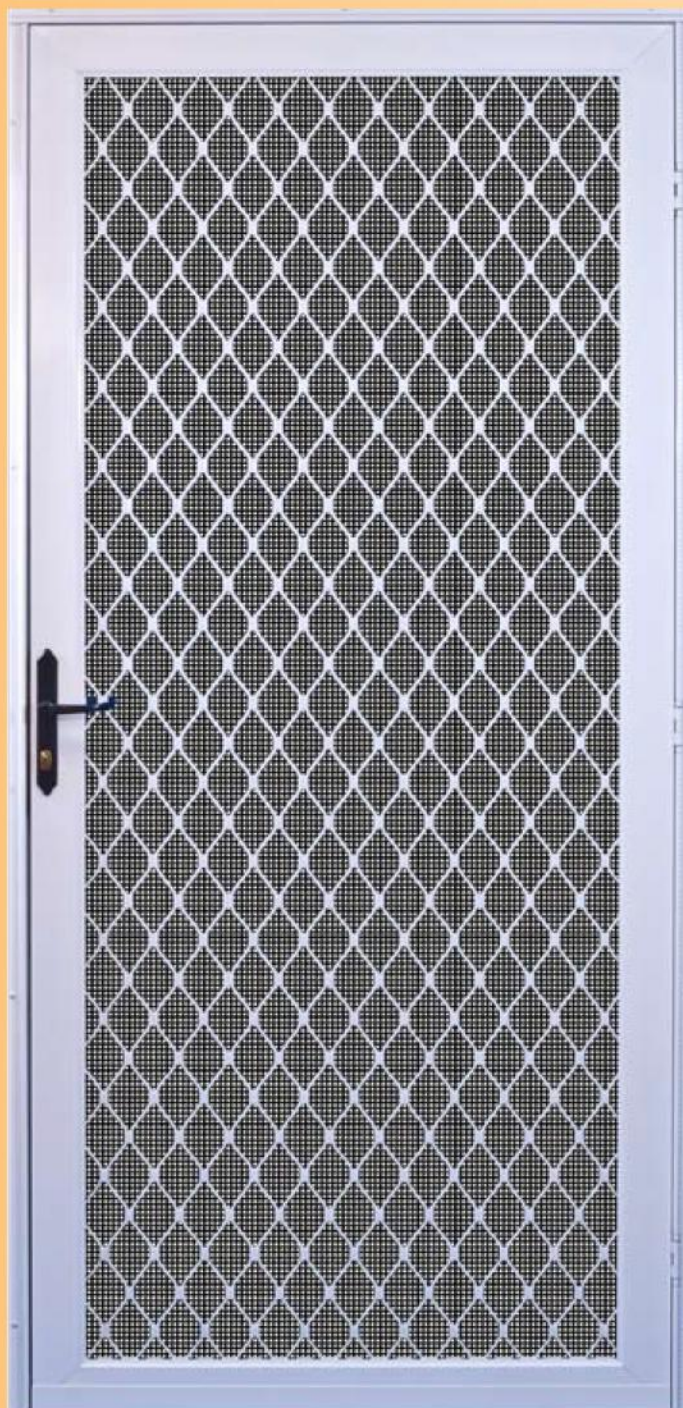
- Heavy duty pneumatic door closer, with adjustable closing speed, all hardware and instructions.
- Safety spring and chain retainer for additional door protection.



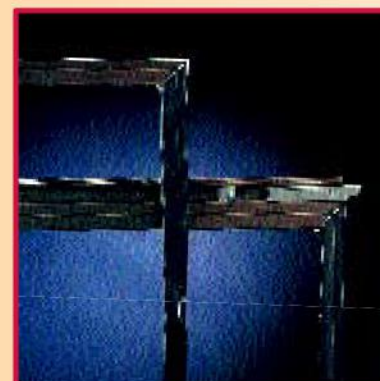
- Virtually pick proof.
- Keyed lock with inside thumb latch, steel strike plate and deep extending dead bolt lock with tumbler cylinder.
- No need to purchase additional expensive lock sets.



- Three heavy duty tamper resistant hinges.
- Pre-hung weather stripped sub frame for easy installation.
- Bottom expander includes vinyl sweep to keep bugs out.



- Heavy gauge extruded aluminum frame is a full 3" x 1" x .062" for lasting durability.
- Available in bronze anodized or white paint finishes.
- High tensile strength extruded aluminum construction with four (4) screws at each corner for extra durability.
- Screened with durable, corrosion resistant charcoal aluminum insect screen.



- Optional tempered safety glass panels conserve energy as a storm door in the winter, and easily remove for warm summer weather.



Details of the Tru-Frame® five-year warranty may be found on the warranty certificate issued with each security screen door.

- **Ventilation** The Tru-Frame® Security Door can be locked securely, allowing you to safely and confidently leave your prime door open day or night for cooling ventilation.
- **Visibility** The Tru-Frame® Security Door allows for clear viewing of the outdoors and visitors with its open structured, sculpted grille.
- **Deadbolt Security** Combined with the high tensile strength aluminum construction, the deadbolt lock affords the best protection available. The deadbolt lock cannot be pried open by a metal or plastic insert, and even if the face plate and handle are jimmied, the concealed mechanism and main bolt remain in the locked position.
- **Rust Free** With extruded aluminum construction, the Tru-Frame® Security Door won't rust and is ideal for marine environments.
- **Easy Operating** With concealed Oilite hinges and extruded aluminum construction, the Tru-Frame® Security Door swings freely and easier than heavy steel security doors.
- **Easy Installation** Pre-hung for easy installation. With complete instructions and hardware, the Tru-Frame® Security Door provides for a correct, professional, and no hassle installation for the do-it-yourself homeowner.
- **French Door Option** Tru-Frame® Security Screen Doors are also available with a French Door Kit for double doors, and include all hardware.
- **Special Sizes** Available by special order.



TRU-FRAME®
A name you can build on.

GUARANTEED TO OPEN AND CLOSE 100,000 TIMES.

Strength That Stops.

Tru-Frame® Security Screen Doors

**The Attractive Security Screen Door with the Grille that—
Keeps Intruders Out; Withstands Bending, Breaking,
Smashing and Pulling.**

SPECIFICATIONS:

1.0 GENERAL

1.1 Scope – All aluminum Tru-Frame® Security Screen Doors of the type and sizes in the plans and/or as called for in this specification shall be furnished with all necessary hardware, fasteners and miscellaneous equipment as herein specified and shall be manufactured by R. LANG COMPANY or equal, the basic design to be a tubular master frame with integral grille.

2.0 MATERIALS

2.1 Alloys – Aluminum shall be commercial quality and of proper alloy for door construction, free from defects impairing strength and durability. All extruded sections and grille shall be of 6063-T5 alloy and temper.

2.2 Door Members – Tubular door stile shall be extruded aluminum, and exposed face width shall be at least 3" x 1" thick with 0.062" nominal wall thickness. Z-bar surround shall be 1-1/8" x 1-1/2" with 0.050" nominal wall thickness. The bottom expander exposed face width shall be at least 1-3/4" x 1" thick with 0.050" nominal wall thickness.

2.3 Grille – Full coverage grille shall be extruded and expanded from 6063 aluminum alloy, having a common chord thickness of 0.297" and opening measurements of 3.275" x 2.720".

2.4 Hardware – Hardware shall be corrosion resistant materials compatible with aluminum. The heavy duty pneumatic door closer shall have a 1-1/2" tube diameter, and 12.9" length between mounting holes. The lock set shall be a keyed lock with an inside thumb latch, stainless steel strike plate and dead bolt with 5 pin tumbler cylinder.

2.5 Screen – Screening material shall be 18 x 16 x 0.011" charcoal aluminum.

2.6 Glass Panels – (Optional) Glass panels shall consist of an outer perimeter frame of extruded aluminum with integral die cast slide bolts. Glass shall be 1/8" thick tempered clear.

3.0 CONSTRUCTION

3.1 Assembly – Doors shall be assembled in a secure and workmanlike manner. The tubular master frame shall be of mitred construction joined at each corner by four (4) screws into an extruded aluminum gusset. The hinged Z-bar shall contain three (3) aluminum hinges with two (2) bronze bushings per hinge leaf, each hinge securely fastened to the main frame.

4.0 FINISH

4.1 Anodizing – All extruded frame members, Z-bars, expanders and grilles shall be anodized 201-R1 commercial bronze.

4.2 Paint – All extruded frame members, Z-bars, expanders and grilles shall be high-gloss white thermal setting polyester coated.

Pre-Hung Style	Fits Opening Width	Fits Opening Height
30" x 80"	29-7/8" to 30-1/8"	79-3/4" to 81-1/4"
32" x 80"	31-7/8" to 30-1/8"	79-3/4" to 81-1/4"
36" x 80"	35-7/8" to 30-1/8"	79-3/4" to 81-1/4"

Hinge Expander Style	Fits Opening Width	Fits Opening Height
30" x 80"	29-3/4" to 30-5/8"	79-3/4" to 81-1/4"
32" x 80"	31-3/4" to 30-5/8"	79-3/4" to 81-1/4"
36" x 80"	35-3/4" to 30-5/8"	79-3/4" to 81-1/4"

Please visit our complete line of products:

www.truframe.com
www.greenhousewindows.com
www.truframesecuritydoor.com
www.rollaway.com



R. Lang Company
Visalia, Richmond & Sacramento, California



TRU-FRAME®

A name you can build on.

8240 W. Doe Visalia, CA 93291
P.O. Box 7960, Visalia, CA 93290
1-800-677-5264 • Fax: 1-888-526-4329
sales@truframe.com • www.truframe.com

